

# VISPRING

Luxury Beds - London 1901



## Retail Support Manual - EMEA

RETAILER'S COPY

## Contents

### Vispring Mattresses and Divans

The Luxe Collection	4
The Classic Collection	11
The Original Collection	14
Limited Edition Set	16
Adjustable Bed	17
Ottoman Bed	18

<b>Shoulder Zone</b>	19
----------------------	----

<b>Legs and Castors</b>	22
-------------------------	----

### Headboards

Headboard Range	24
-----------------	----

### Accessories

Toppers	28-
Drawer Divans	30
Divan Heights, Divan Splits	31
Divan Corners	32
Divan Skirts, Cut-out Corners, Zipping, Mantle	33
Mattress Pads, Fitted Divan Cover, Quilted Mattress Protectors	34
Pillows	35
Duvets	36

<b>Customer's Own Material (C.O.M.)</b>	37
---	----

<b>General Information</b>	43
----------------------------	----



## MATTRESSES AND DIVANS

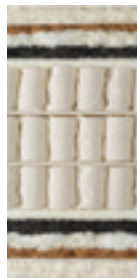
---

## THE LUXE COLLECTION

### DIAMOND MAJESTY MATTRESS + PRESIDENT DIVAN



#### DIAMOND MAJESTY



##### MATTRESS

###### TECHNOLOGY

- Three layer hand-nested calico pocket spring construction
- Springs diameter: 60 mm
- 4182 springs in size 200 x 200 cm
- **3876 springs in size 180 x 200 cm**
- 3162 springs in size 150 x 200 cm
- 1836 springs in size 90 x 200cm

###### UPHOLSTERY

- Exclusive natural fillings: British wool (300 gsm), Austrian hand-opened long-strand Moosburger® horse tail (900 gsm), Shetland wool (450 gsm) blended with cashmere (200 gsm), silk (200 gsm) and bamboo (200 gsm), vicuna (200 gsm), Shetland fleece wool and organic cotton (900 gsm)
- Finest quality ticking
- Hand-tied woollen tufts and twine
- Made with M-Pure – a natural flame retardant finish

###### BORDERS

- Upholstered with coir and wool and finished in British Merino wool (TK-2095 beige or TK-2096 navy)
- 6 rows of hand side-stitching
- Horizontal handles
- Air vents
- Overall mattress depth: 28 cm + 6 cm doming (+/- 2 cm)



#### PRESIDENT



##### DIVAN

###### CONSTRUCTION

- Two layer hand-nested calico pocket spring construction
- 3320 springs in size 180 x 200 cm
- Solid beech frame

###### UPHOLSTERY

- Long-stranded horsehair (1200 gsm), blended British fleece wool and cotton
- Finest quality ticking or upholstery fabric

###### HEIGHT

- President 33,5 cm
- President low 25 cm

**(Divan measured from bottom edge to top edge)**

**gsm - grammes per square metre**

## THE LUXE COLLECTION

### OPULENCE MATTRESS + VICEROY DIVAN



#### OPULENCE



##### MATTRESS

###### TECHNOLOGY

- Three layer hand-nested calico pocket spring construction
- Springs diameter: 60 mm
- 4386 springs in size 200 x 200 cm
- **4080 springs in size 180 x 200 cm**
- 3366 springs in size 150 x 200 cm
- 2040 springs in size 90 x 200 cm

###### UPHOLSTERY

- Exclusive natural fillings: layered Shetland wool and cotton (900 gsm), Austrian hand-opened long strand Moosburger® horse tail (450 gsm), blend of cashmere (200 gsm), alpaca (150 gsm), bamboo (150 gsm), mulberry silk (100 gsm), layered Shetland wool and cotton (900 gsm).
- Finest quality ticking
- Hand-tied woollen tufts and twine
- Made with M-Pure – a natural flame retardant finish

###### BORDERS

- Upholstered with coir and wool
- 5 rows of hand side-stitching
- Horizontal handles
- Air vents
- Overall mattress depth: 25 cm + 6 cm doming (+/- 2 cm)



#### VICEROY



##### DIVAN

###### CONSTRUCTION

- Two layer hand-nested calico pocket spring construction
- 2416 springs in size 180 x 200 cm
- Solid timber frame

###### UPHOLSTERY

- Horsehair pad (1200 gsm), blended British fleece wool and cotton (1200 gsm)
- Finest quality ticking or upholstery fabric

###### HEIGHT

- Viceroy 33,5 cm
- Viceroy low 25 cm

**(Divan measured from bottom edge to top edge)**

**gsm - grammes per square metre**

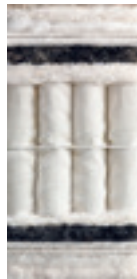


## THE LUXE COLLECTION

### MAGNIFICENCE MATTRESS + VICEROY DIVAN



#### MAGNIFICENCE



##### MATTRESS

###### TECHNOLOGY

- Two layer hand-nested calico pocket spring construction
- Springs diameter: 49 mm
- 3724 springs in size 200 x 200 cm
- **3420 springs in size 180 x 200 cm**
- 2812 springs in size 150 x 200 cm
- 1748 springs in size 90 x 200 cm

###### UPHOLSTERY

- Exclusive natural fillings: blended real Shetland wool and cotton (900 gsm), Austrian hand-opened long-strand Moosburger® horse tail (610 gsm), hand-teased real Shetland wool (600 gsm), cashmere (200 gsm), mohair (200 gsm), blended real Shetland wool and cotton (1200 gsm)
- Finest quality ticking
- Hand-tied woollen tufts and twine
- Made with M-Pure – a natural flame retardant finish

###### BORDERS

- Upholstered with coir and wool
- 5 rows of hand side-stitching
- Horizontal handles
- Air vents
- Overall mattress depth: 25 cm + 6 cm doming (+/- 2 cm)



#### VICEROY



##### DIVAN

###### CONSTRUCTION

- Two layer hand-nested calico pocket spring construction
- 2416 springs in size 180 x 200 cm
- Solid timber frame

###### UPHOLSTERY

- Horsehair pad (1200 gsm), blended British fleece wool and cotton (1200 gsm)
- Finest quality ticking or upholstery fabric

###### HEIGHT

- Viceroy 33,5 cm
- Viceroy low 25 cm

**(Divan measured from bottom edge to top edge)**

**gsm - grammes per square metre**

# VISPRING

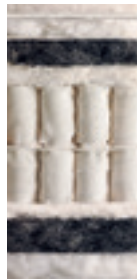
Luxury Beds - London 1901

## THE LUXE COLLECTION

### SIGNATORY MATTRESS + VICEROY DIVAN



#### SIGNATORY



##### MATTRESS

###### TECHNOLOGY

- Two layer hand-nested calico pocket spring construction
- Springs diameter: 50 mm
- 3552 springs in size 200 x 200 cm
- **3256 springs in size 180 x 200 cm**
- 2664 springs in size 150 x 200 cm
- 1628 springs in size 90 x 200 cm

###### UPHOLSTERY

- Exclusive natural fillings: blended real Shetland wool and cotton (900 gsm), Austrian hand-opened long-strand Moosburger® horsetail (450 gsm), hand-teased real Shetland wool (600 gsm) blended with cashmere (200 gsm), blended real Shetland wool and cotton (900 gsm)
- Finest quality ticking
- Hand-tied woollen tufts and twine
- Made with M-Pure – a natural flame retardant finish

###### BORDERS

- Upholstered with coir and wool
- 4 rows of hand side-stitching
- Horizontal handles
- Air vents
- Overall mattress depth: 23 cm + 6 cm doming (+/- 2 cm)



#### VICEROY



##### DIVAN

###### CONSTRUCTION

- Two layer hand-nested calico pocket spring construction
- 2416 springs in size 180 x 200 cm
- Solid timber frame

###### UPHOLSTERY

- Horsehair pad (1200 gsm), blended British fleece wool and cotton (1200 gsm)
- Finest quality ticking or upholstery fabric

###### HEIGHT

- Viceroy high 33,5 cm
- Viceroy low 25 cm

**(Divan measured from bottom edge to top edge)**

**gsm - grammes per square metre**

# VISPRING

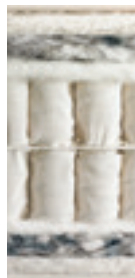
Luxury Beds - London 1901

## THE LUXE COLLECTION

### SUBLIME SUPERB MATTRESS + SOVEREIGN DIVAN



#### SUBLIME SUPERB



##### MATTRESS

###### TECHNOLOGY

- Two layer hand-nested calico pocket spring construction
- Springs diameter: 51 mm
- 3360 springs in size 200 x 200 cm
- **3080 springs in size 180 x 200 cm**
- 2520 springs in size 150 x 200 cm
- 1540 springs in size 90 x 200 cm

###### UPHOLSTERY

- Exclusive natural fillings: British fleece wool (300 gsm), South American hand-teased horsetail (610 gsm) blended with real Shetland wool (610gsm), silk (150 gsm) and mohair (150 gsm), blended real Shetland wool and cotton (1200 gsm)
- Finest quality ticking
- Hand-tied woollen tufts and twine
- Made with M-Pure – a natural flame retardant finish

###### BORDERS

- Upholstered with coir and wool
- 4 rows of hand side-stitching
- Horizontal handles
- Air vents
- Overall mattress depth: 23 cm + 6 cm doming (+/- 2 cm)



#### SOVEREIGN



##### DIVAN

###### CONSTRUCTION

- Hand-nested calico pocket spring construction
- 1660 springs in size 180 x 200 cm
- Solid timber frame

###### UPHOLSTERY

- Coir (1200 gsm), blended British fleece wool and cotton (1200 gsm)
- Finest quality ticking or upholstery fabric

###### HEIGHT

- Sovereign high 31 cm
- Sovereign low 25 cm
- Sovereign shallow/Bed base 17 cm

**(Divan measured from bottom edge to top edge)**

gsm - grammes per square metre



## THE LUXE COLLECTION

### TIARA SUPERB MATTRESS + SOVEREIGN DIVAN



#### TIARA SUPERB



##### MATTRESS

###### TECHNOLOGY

- Two layer hand-nested calico pocket spring construction
- Springs diameter: 60 mm
- 2924 springs in size 200 x 200 cm
- **2720 springs in size 180 x 200 cm**
- 2242 springs in size 150 x 200 cm
- 1360 springs in size 90 x 200 cm

###### UPHOLSTERY

- Exclusive natural fillings: blended real Shetland wool and cotton (1200 gsm), hand-teased South American horsetail (610 gsm) blended with Shetland wool (610 gsm), blended Shetland wool and cotton (1200 gsm)
- Finest quality ticking
- Hand-tied woollen tufts and twine
- Made with M-Pure – a natural flame retardant finish

###### BORDERS

- Upholstered with coir and wool
- 3 rows of hand side-stitching
- Horizontal handles
- Air vents
- Overall mattress depth: 23 cm + 6 cm doming (+/- 2 cm)



#### SOVEREIGN



##### DIVAN

###### CONSTRUCTION

- Hand-nested calico pocket spring construction
- 1660 springs in size 180 x 200 cm
- Solid timber frame

###### UPHOLSTERY

- Coir (1200 gsm), blended British fleece wool and cotton (1200 gsm)
- Finest quality ticking or upholstery fabric

###### HEIGHT

- Sovereign high 31 cm
- Sovereign low 25 cm
- Sovereign shallow/Bed base 17 cm

**(Divan measured from bottom edge to top edge)**

gsm - grammes per square metre

## THE LUXE COLLECTION

### MARQUESS SUPERB MATTRESS + SOVEREIGN DIVAN



#### MARQUESS SUPERB



##### MATTRESS

###### TECHNOLOGY

- Two layer hand-nested calico pocket spring construction
- Springs diameter: 60 mm
- 2924 springs in size 200 x 200 cm
- **2720 springs in size 180 x 200 cm**
- 2242 springs in size 150 x 200 cm
- 1360 springs in size 90 x 200 cm

###### UPHOLSTERY

- Exclusive natural fillings: bonded British fleece wool and cotton (1350 gsm), British fleece wool (600 gsm), blended real Shetland wool and cotton (1200 gsm), silk (200 gsm)
- Finest quality ticking
- Hand-tied woollen tufts and twine
- Made with M-Pure – a natural flame retardant finish

###### BORDERS

- Upholstered with coir and wool
- 3 rows of hand side-stitching
- Horizontal handles
- Air vents
- Overall mattress depth: 23 cm + 6 cm doming (+/- 2 cm)



#### SOVEREIGN



##### DIVAN

###### CONSTRUCTION

- Hand-nested calico pocket spring construction
- 1660 springs in size 180 x 200 cm
- Solid timber frame

###### UPHOLSTERY

- Coir (1200 gsm), blended British fleece wool and cotton (1200 gsm)
- Finest quality ticking or upholstery fabric

###### HEIGHT

- Sovereign high 31 cm
- Sovereign low 25 cm
- Sovereign shallow/Bed base 17 cm

**(Divan measured from bottom edge to top edge)**

gsm - grammes per square metre

## THE CLASSIC COLLECTION

### REGENT MATTRESS + PRESTIGE DIVAN



#### REGENT



##### MATTRESS

###### TECHNOLOGY

- Hand-nested calico pocket spring construction
- Springs diameter: 48 mm
- 2322 springs in size 200 x 200 cm
- **2107 springs in size 180 x 200 cm**
- 1720 springs in size 150 x 200 cm
- 1032 springs in size 90 x 200 cm

###### UPHOLSTERY

- Exclusive natural fillings: British Fleece Wool (300 gsm), hand-teased South American horsetail (400 gsm), hand-teased real Shetland wool (800 gsm) blended with silk (200 gsm) and mohair (200 gsm), blended real Shetland wool and cotton (900 gsm)
- Finest quality ticking
- Hand-tied woollen tufts and twine
- Made with M-Pure – a natural flame retardant finish

###### BORDERS

- Upholstered with protective wool
- 3 rows of hand side-stitching
- Horizontal handles
- Air vents
- Overall mattress depth: 23 cm + 6 cm doming (+/- 2 cm)



#### PRESTIGE



##### DIVAN

###### CONSTRUCTION

- Hand-nested pocket spring construction
- 1212 springs in size 180 x 200 cm
- Solid timber frame

###### UPHOLSTERY

- Coir (1200 gsm), blended British fleece wool and cotton (1200 gsm)
- Finest quality ticking or upholstery fabric

###### HEIGHT

- Prestige high 31 cm
- Prestige low 25 cm
- Prestige shallow/Bed Base 17 cm

**(Divan measured from bottom edge to top edge)**

gsm - grammes per square metre

## THE CLASSIC COLLECTION

### REGAL SUPERB MATTRESS + PRESTIGE DIVAN



#### REGAL SUPERB



##### MATTRESS

###### TECHNOLOGY

- Hand-nested calico pocket spring construction
- Springs diameter: 48 mm
- 2322 springs in size 200 x 200 cm
- **2107 springs in size 180 x 200 cm**
- 1720 springs in size 150 x 200 cm
- 1032 springs in size 90 x 200 cm

###### UPHOLSTERY

- Exclusive natural fillings: bonded British fleece wool and cotton (1000 gsm), South American horsetail blended with British fleece wool (1200 gsm), blended real Shetland wool and cotton (900 gsm)
- Finest quality ticking
- Hand tufted with felt washers
- Made with M-Pure – a natural flame retardant finish

###### BORDERS

- Upholstered with protective wool
- 3 rows of hand side-stitching
- Horizontal handles
- Air vents
- Overall mattress depth: 23 cm + 6 cm doming (+/- 2 cm)



#### PRESTIGE



##### DIVAN

###### CONSTRUCTION

- Hand-nested pocket spring construction
- 1212 springs in size 180 x 200 cm
- Solid timber frame

###### UPHOLSTERY

- Coir (1200 gsm), blended British fleece wool and cotton (1200 gsm)
- Finest quality ticking or upholstery fabric

###### HEIGHT

- Prestige high 31 cm
- Prestige low 25 cm
- Prestige shallow/Bed base 17 cm

**(Divan measured from bottom edge to top edge)**

**gsm - grammes per square metre**

## THE CLASSIC COLLECTION

### HERALD SUPERB MATTRESS + PRESTIGE DIVAN



#### HERALD SUPERB



##### MATTRESS

###### TECHNOLOGY

- Hand-nested calico pocket spring construction
- Springs diameter: 51 mm
- 1968 springs in size 200 x 200 cm
- **1804 springs in size 180 x 200 cm**
- 1476 springs in size 150 x 200 cm
- 861 springs in size 90 x 200 cm

###### UPHOLSTERY

- Exclusive natural fillings: bonded British fleece wool and cotton (1000 gsm), horsehair (1200 gsm), blended British fleece wool and cotton (1200 gsm)
- Finest quality ticking
- Hand tufted with felt washers
- Made with M-Pure – a natural flame retardant finish

###### BORDERS

- Upholstered with protective wool
- 2 rows of hand side-stitching
- Horizontal handles
- Air vents
- Overall mattress depth: 21 cm + 6 cm doming (+/- 2 cm)



#### PRESTIGE



##### DIVAN

###### CONSTRUCTION

- Hand-nested pocket spring construction
- 1212 springs in size 180 x 200 cm
- Solid timber frame

###### UPHOLSTERY

- Coir (1200 gsm), blended British fleece wool and cotton (1200 gsm)
- Finest quality ticking or upholstery fabric

###### HEIGHT

- Prestige high 31 cm
- Prestige low 25 cm
- Prestige shallow/Bed base 17 cm

**(Divan measured from bottom edge to top edge)**

**gsm - grammes per square metre**



# VISPRING

Luxury Beds - London 1901

## THE ORIGINAL COLLECTION

### DEVONSHIRE MATTRESS + WOOL DE LUXE DIVAN



#### DEVONSHIRE



##### MATTRESS

###### TECHNOLOGY

- Hand-nested calico pocket spring construction
- Springs diameter: 54 mm
- 1794 springs in size 200 x 200 cm
- **1638 springs in size 180 x 200 cm**
- 1326 springs in size 150 x 200 cm
- 780 springs in size 90 x 200 cm

###### UPHOLSTERY

- Exclusive natural fillings: British fleece wool (300 gsm), hand-teased Devonshire wool (1700 gsm), British fleece wool (600 gsm)
- Only available in viscose wool blend ticking (TK 596)
- Hand tufted with felt washers
- Made with M-Pure – a natural flame retardant finish

###### BORDERS

- Upholstered with protective wool
- 2 rows of hand side-stitching
- Horizontal handles
- Air vents
- Overall mattress depth: 21 cm + 6 cm doming (+/- 2 cm)



PURE NEW WOOL



M-Pure

#### WOOL DE LUXE



##### DIVAN

###### CONSTRUCTION

- Hand-nested pocket spring construction
- 756 springs in size 180 x 200 cm
- Solid timber frame

###### UPHOLSTERY

- Softly needled (600 gsm) and heavily needled British fleece wool (600 gsm)
- Finest quality ticking or upholstery fabric

###### HEIGHT

- Wool De Luxe high 31 cm
- Wool De Luxe low 25 cm
- Wool De Luxe shallow/Bed base 17 cm

**(Divan measured from bottom edge to top edge)**

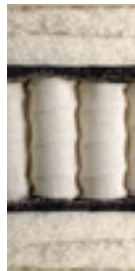
**gsm - grammes per square metre**

## THE ORIGINAL COLLECTION

### BARONET SUPERB MATTRESS + DE LUXE DIVAN



#### BARONET SUPERB



##### MATTRESS

###### TECHNOLOGY

- Hand-nested calico pocket spring construction
- Springs diameter: 54 mm
- 1794 springs in size 200 x 200 cm
- **1638 springs in size 180 x 200 cm**
- 1326 springs in size 150 x 200 cm
- 780 springs in size 90 x 200 cm

###### UPHOLSTERY

- Exclusive natural fillings: horsehair (900 gsm), bonded British fleece wool and cotton (1000 gsm), blended British fleece wool and cotton (1200 gsm)
- Finest quality ticking
- Hand tufted with felt washers
- Made with M-Pure – a natural flame retardant finish

###### BORDERS

- Upholstered with protective wool
- 2 rows of hand side-stitching
- Horizontal handles
- Air vents
- Overall mattress depth: 21 cm + 6 cm doming (+/- 2 cm)



#### DE LUXE



##### DIVAN

###### CONSTRUCTION

- Hand-nested pocket spring construction
- 756 springs in size 180 x 200 cm
- Solid timber frame

###### UPHOLSTERY

- Coir (1200 gsm), blended British fleece wool and cotton (1200 gsm)
- Finest quality ticking or upholstery fabric

###### HEIGHT

- De Luxe high 31 cm
- De Luxe low 25 cm
- De Luxe shallow/Bed base 17 cm

**(Divan measured from bottom edge to top edge)**

**gsm - grammes per square metre**

# VISPRING

Luxury Beds - London 1901

## LIMITED EDITION

### LIMITED EDITION LANA BED SET



The Limited Edition Lana is available as a full bed set including: mattress, divan, headboard and legs, or mattress only.

#### LANA



##### MATTRESS

###### TECHNOLOGY

- Single layer hand-nested calico pocket spring construction
- Springs diameter: 54 mm
- 1794 springs in size 200 x 200 cm
- **1638 springs in size 180 x 200 cm**
- 1326 springs in size 150 x 200 cm
- 780 springs in size 90 x 200 cm

###### UPHOLSTERY

- Hand crafted using a blend of natural fillings, including locally sourced Exmoor Horn wool and Tencel™.
- Layered Exmoor Horn Wool and Tencel™ (1800gsm), Horsehair (1200gsm), needled Exmoor Horn Wool and Tencel™ (300gsm).
- Finest quality wool and viscose blend ticking
- Hand tufted with felt tufts
- Naturally flame retardant

###### BORDERS

- Upholstered with British fleece wool, backed with spunlace cotton
- 2 rows of hand side-stitching
- Horizontal handles
- Air vents
- Overall mattress depth: 21 cm + 6 cm doming (+/- 2 cm)

#### LANA



##### DIVAN

###### CONSTRUCTION

- Shallow divan 17 cm
- 756 springs in size 180 x 200 cm
- Solid timber frame

###### UPHOLSTERY

- Coir (1200 gsm), blended British fleece wool and cotton (900 gsm)

**gsm - grammes per square metre**

##### SPECIFICATION:

###### MATTRESS AND DIVAN

Four square corners on both mattress and divan.

###### LEGS

2 x L15 (Lana leg) 15 cm high brass effect metal leg exclusive to Lana.

###### HEADBOARD

Visible height from mattress top: 67 cm.  
Depth: 9 cm. Headboard back upholstered with black raytek cover. Available as bolt-through only.

###### FABRIC

Headboard and divan is available in all non-supplement Timeless Collection fabrics. No supplement fabrics or C.O.M.

###### AVAILABLE SIZES:

- 90 x 200 cm, 90 x 210 cm, 90 x 220 cm
- 100 x 200 cm, 100 x 210 cm, 100 x 220 cm
- 150 x 200 cm, 150 x 210 cm, 150 x 220 cm
- 160 x 200 cm, 160 x 210 cm, 160 x 220 cm
- 180 x 200 cm, 180 x 210 cm, 180 x 220 cm
- 200 x 200 cm, 200 x 210 cm, 200 x 220 cm

## ADJUSTABLE BED

### TOPAZ II



At the touch of a button, Topaz II adapts effortlessly to your body, delivering comfort and support whenever you need it, for reading, for eating, for relaxing and resting. Pair Topaz II adjustable bed with your choice from a selection of Vispring mattresses and luxury upholstery fabrics.

- Flexible base with encapsulated pocket springs
- Powerful, smooth and quiet motorised operation
- Remote handset (Bluetooth® with a Vispring IOS/Android APP)
- Battery powered return to flat feature
- Upholstered surround in a choice of Vispring fabrics
- Available in 90 cm, 2 x 75 cm, 2 x 90 cm and 2 x 100 cm wide sizes.

#### HEADBOARD COMPATIBILITY

Deep upholstery can be problematic with recliners as the elevating head end cushion deck can foul against overhanging upholstery profile. This means the following headboards are not be suitable for use with the Topaz II adjustable base:

- Eccleston
- Gate
- Grand Berkeley
- Lana
- Lennox
- Moncorvo

All headboards fitted on the Topaz II must be floor-standing only.

#### MATTRESS COMPATIBILITY

All mattresses up to Tiara Superb in default TK-1036 apart from Devonshire in TK-596, **Soft and Medium tension only**. Shoulder Zone mattresses are not suitable for adjustable bed use.

#### LEG COMPATIBILITY:

The Topaz II is only compatible with:

- L1 in heights 15 cm, 18 cm and 23 cm
- L2 leg in height 15 cm
- L4 leg in heights 15 cm, 18 cm and 23 cm

#### IMPORTANT: OVERSIZED SURROUND

The finished size of the Topaz II surround frame (4 cm larger than nominal size of mattress) means that the EMEA retailer needs to specify a larger headboard width (+4 cm) when ordering headboard for use with the Topaz II. At the same time, non-standard headboard spacings need to be specified or the headboard will not fit the Topaz 2 surround. Topaz II frame surround height is 24.5 cm (excluding leg).

# VISPRING

Luxury Beds - London 1901

## OTTOMAN BED

### EUROPA OTTOMAN



IMPORTANT: Europa Ottoman is NOT available in 'Plush' fabrics from Timeless Collection II or 'Luxe Velvet' and 'Leather' fabrics from Timeless Collection III.

Fusing functionality with a contemporary aesthetic, the brand-new Ottoman divan from Vispring features an end-opening that lifts up, with the help of gas struts, to reveal ample storage space. The Europa Ottoman divan is constructed using carefully nest pockets springs in a sustainable timber frame that create a responsive layer that works in harmony with the mattress above.

#### TECHNOLOGY

- Firm edge base
- Floating, single layer mini-sprung pocket spring construction
- **1530 mini-springs in size 180 x 200 cm** (2 x 90 cm x 200 cm)
- 1350 mini-springs in size 160 x 200 cm (2 x 80 cm x 200 cm)
- 1320 mini-springs in size 150 x 200 cm (2 x 75 cm x 200 cm)
- 765 mini-springs in size 90 x 200 cm (1 x 90 cm x 200 cm)

#### UPHOLSTERY

- Fillings: Needled and thermally bonded Polyester (550gsm), pocketed mini-springs, Airstream memory wool (600gsm)
- Fully upholstered top panel
- Lifting Platform - upper & lower piping

#### CONSTRUCTION

- Solid timber frame
- Structural wooden base
- Hardwood corner post design - all joints glued and screwed
- 45 mm corner radius - identical to other Vispring divan bases
- Scratch and abrasion resistant interior EN14322
- Anti-bacterial surface interior ISO 22196

#### LIFTING PLATFORM

- High spec 30° offset gas strut with improved dampening
- Inbuilt manual gas strut safety lock

#### INTERNAL STORAGE SPACE

**90 x 200 cm (1 x 90 x 200 cm)**

W x H x L 86 x 25.5 x 197 cm

**150 x 200 cm (2 x 75 x 200 cm)**

W x H x L 71 x 25.5 x 197 cm (per base)

**160 x 200 cm (2 x 80 x 200 cm)**

W x H x L 76 x 25.5 x 197 cm (per base)

**180 x 200 cm (2 x 90 x 200 cm)**

W x H x L 86 x 25.5 x 197 cm (per base)

#### PRODUCT DIMENSIONS

- Height- 44 cm (including leg 4 cm)
- Length: 203 cm
- Width: 92 cm / 154 cm / 164 cm / 184 cm

#### LEGS

- L2 leg, 3 cm in choice of finish
- Available finishes: Natural, Mahogany, Steel or Ebony

#### MATTRESS COMPATIBILITY

The Ottoman Europa comes with mattress weight restrictions and only covers mattresses with a maximum weight of 79 kg. This means that it is only suitable for use with single spring mattresses in a soft, medium and firm tension.

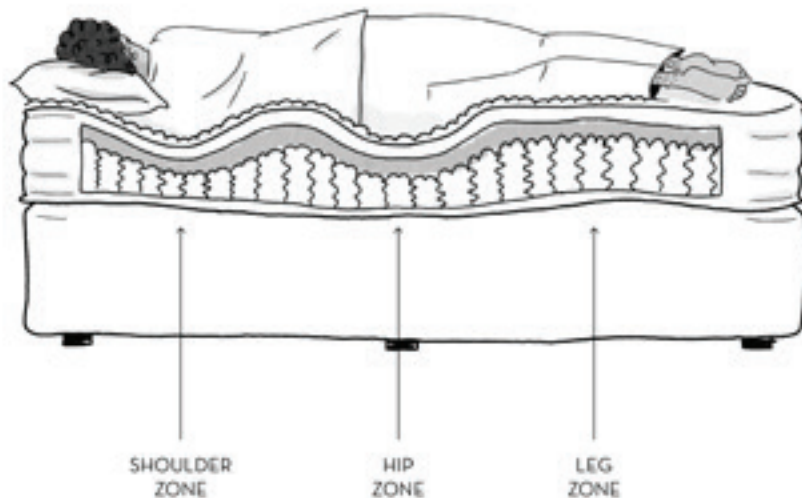
Tension Mattress	Soft	Medium	Firm	Extra Firm
Baronet Superb	●	●	●	○
Devonshire	●	●	●	○
Herald Superb	●	●	●	○
Regal Superb	●	●	●	○
Regent	●	●	●	○



## SHOULDER ZONE - MATTRESS TENSION OPTION

A Vispring mattress with Shoulder Zone is specially handcrafted to equally distribute bodyweight, conform to the body contours and eliminate pressure points along the shoulders and hips.

Shoulder Zone mattresses are split into three zones with softer tension for your shoulders, allowing them to sink further into the mattress without losing proper support, and firmer tension for your hips and lower back, where your body is at its heaviest. The tension in the leg zone is softer to promote natural spine alignment, allowing for the mattress to cradle your legs and conform to your body's curves.



### SHOULDER ZONE

The shoulder area requires a deeper cradle with softer spring tension to sink into. The zone length is 60cm from the top of the mattress.

### HIP ZONE

Firmer tension provides excellent lumbar support (around the hip area) and where body weight is greatest.

The central hip zone's length depends on the specified mattress length, i.e., for a 200 cm mattress, the central hip zone will be 80cm in length.

### LEG ZONE

Lower weight distribution suited to a softer spring tension. The zone is 60 cm from the foot end of the mattress.

### TURNABLE

The three spring zones are mirrored, allowing for the mattress to be turned. Turning the mattress will allow the fillings to redistribute throughout, helping its recovery and longevity.

### WEIGHT GUIDE

The Shoulder Zone mattresses are available in two different tension configurations:

- Soft-Medium-Soft: optimal for persons weighing up to 85kg
- Medium-Firm-Medium: offering the best support for persons weighing between 85-102 kg.

### NOTE:

The Shoulder zone mattresses only deliver conclusive benefits for side-sleepers weighing up to 102kg in body weight.

## SHOULDER ZONE AVAILABILITY

### MATTRESS AVAILABILITY

The Shoulder Zone spring option is available with most of our mattresses. However, due to the springs used in some models, there are exceptions. Please see below table for full details.

Mattress	Soft - Medium - Soft	Medium - Firm - Medium
Lana	●	●
Baronet Superb	●	●
Devonshire	○	○
Herald Superb	●	●
Regal Superb	○	○
Regent	○	○
Marques Superb	●	●
Tiara Superb	●	●
Sublime Superb	●	●
Signatory	●	●
Magnificence	○	○
Diamond Majesty	○	○

## SHOULDER ZONE ORDER PROCESSING

- Shoulder Zone tension option is only available on the six (6) specified mattress models.
- Shoulder Zone is only available in Soft-Medium-Soft (S-M-S) or Medium-Firm-Medium (M-F-M).
- Shoulder Zone will be specified with embroidery on display models only (both sides) and with woven labels on customer mattresses.

### Configuration T

3 zones- Single tension  
Shoulder Zone S-M-S



### Configuration R

4 zones- Combination tension  
Shoulder Zone S-M-S  
+ Soft tension



### Configuration V

4 zones- Combination tension  
Shoulder Zone S-M-S  
+ Medium tension



### Configuration W

4 zones- Combination tension  
Shoulder Zone S-M-S  
+ Firm tension



### Configuration F

6 zones- Combination tension  
Shoulder Zone S-M-S  
+ Shoulder Zone M-F-M



### Configuration U

3 zones- Single tension  
Shoulder Zone M-F-M



### Configuration X

4 zones- Combination tension  
Shoulder Zone M-F-M  
+ Medium tension



### Configuration Y

4 zones- Combination tension  
Shoulder Zone M-F-M  
+ Firm tension



### Configuration Z

4 zones- Combination tension  
Shoulder Zone M-F-M  
+ Extra Firm tension



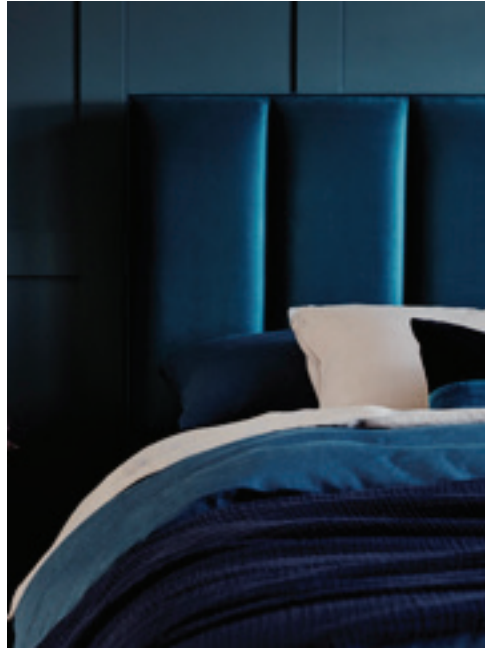
## LEGS AND CASTORS

LEG	Description	Finishes Available	Height	
	L1	Wooden leg	Natural, Mahogany, Ebony, Steel <b>(No charge with Shallow divan)</b>	7,5 cm 13 cm 15 cm 18 cm 23 cm
	L2	Wooden leg	Natural, Mahogany, Ebony, Steel	3 cm 5 cm 9 cm 15 cm
	L3	Wooden leg	Natural, Mahogany, Ebony, Steel	6,5 cm
	L4	Metal leg	Chrome <b>(No charge with Shallow divan)</b>	13 cm 15 cm 18 cm 23 cm
	L5	Metal leg	Bronze	15 cm

LEG	Description	Finishes Available	Height
	B1 Wooden bun foot	Natural, Mahogany, Ebony, Steel	7 cm
	B2 Metal/Wooden bun foot	Metal: Bronze, Chrome Wood: Natural, Mahogany, Ebony, Steel	6,5 cm
	C1 Shepherd castor	Polypropylene	7 cm
	C2 Locking Castor	Polypropylene	8,5 cm
	C3 Castor Cup for C1 Castor	Natural, Mahogany, Ebony, Steel	7,5 cm
	C4 Castor Cup for C1 Castor	Plastic, grey	7,5 cm

L3 AND L5 LEGS - QUANTITY	Default		>200 cm long, Viceroy, Drawer Divan		President	
	Corner	Centre	Corner	Centre	Corner	Centre
Twin	4		4	2	4	4
Double/Queen	4	2	4	2	4	4
Linked Divans: one-piece mattress	4	2	4	6	4	10
Linked Divans: Z & L sets	8		8	4	8	8

LEGS/CASTORS/BUN FEET (except legs L3 and L5 left)	Default	>200cm long, Viceroy, Drawer Divan	President
	Quantity	Quantity	Quantity
Twin	4	6	8
Double/Queen	8	8	12
Linked Divans: one-piece mattress	8	12	16
Linked Divans: Z & L sets	8	12	16



## HEADBOARDS

---



# VISPRING

Luxury Beds - London 1901

## HEADBOARDS

### GROUP I



Theia\*



Asteria\*

	Height	Thickness
Theia	120 cm	5 cm
Asteria	120 cm	4 cm

### GROUP II



Rhea



Iris



Muses



Victoria

	Visible height	Thickness
Rhea	55 cm	8 cm
Iris	62 cm	8 cm
Muses	55 cm	6,5 cm
Victoria	70 cm	11,6 cm

### GROUP III



Artemis



Helios



Hera

	Visible height	Thickness
Artemis	62 cm	8 cm
Helios	66 cm	8 cm
Hera	55 cm	8 cm

\*Theia and Asteria are only available with a floor to ceiling height of 120 cm. This is an overall height and visible height cannot be configured.

# VISPRING

Luxury Beds - London 1901

## GROUP IV



Themis



Elba



Enyo



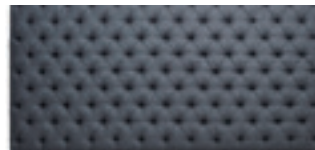
Palladio

	Visible height	Thickness
Themis	Own choice	10 cm
Elba	62 cm*	7 cm
Enyo	65 cm	6,5 cm
Palladio	48 cm	12 cm

## GROUP V



Achilles



Aldo



Atlas



Ceto



Clabon



Eccleston



Kew



Lennox



Moncorvo

	Visible height	Thickness
Achilles	80 cm	11,3 cm
Aldo	96 cm	14,5 cm
Atlas	90 cm	12 cm
Ceto	75 cm	12 cm
Clabon	76 cm	9 cm / 12 cm **
Eccleston	76 cm*	9 cm / 12 cm **
Kew	75 cm / 62,5 cm	8,7 cm
Lennox	76 cm*	9 cm / 12 cm **
Moncorvo	76 cm*	9 cm / 12 cm **

\* Height can vary with width

\*\* 9 cm in headboards up to 160 cm wide.  
12 cm in headboards over 160 cm wide.

## GROUP VI



Berkeley



Gate\*



Grand Berkeley

	Height from floor	Thickness	Wing width
Berkeley	167 cm/177 cm**	9,5 cm	N/A
Gate	119,6 cm***	11,5 cm	27 cm
Grand Berkeley	167 cm/177 cm**	9,5 cm	91,3 cm

### HEADBOARD FIXINGS:

- All headboards are bolt-through as standard.
- Bolt-through headboards will be floor-standing by default.
- Grand Berkeley, Berkeley, Gate, Atlas and Aldo are floor-standing only. All other model are suitable for floor-standing or floating (flush with divan bottom edge) installation.
- If headboard is ordered with euro-style bracket fitting, the headboard will be flush with the divan base by default.
- Grand Berkeley, Berkeley, Gate, Aldo and Kew headboards are available as bolt-through only.
- Atlas headboard in 180 cm and up is available as bolt-through only. For widths less than 180 cm, the euro-fit bracket fixing is available.

### IMPORTANT:

- All headboards, except Theia, Asteria and Victoria, are upholstered on both sides as standard.
- Visible height is measured from the mattress tape edge.
- Overall headboard height will vary with mattress and divan selections, and in the case of floor-standing headboards with leg/castor option.
- All headboards are available in non-standard sizes: price upon request
- Other request: price upon requests.
- Berkeley and Grand Berkeley headboards are not suitable for leather upholstery.

\*Gate headboard available with Ebony, Natural, Steel and Mahogany finishes.

\*\*167 cm for headboards up to 200 cm, 177 cm for headboards over 200 cm.

\*\*\*Gate headboard height varies with the height of the divan and leg.



## ACCESSORIES

---

## ACCESSORIES

### MATTRESS TOPPERS

A mattress topper will add a layer of luxury to your bed. Our toppers are handmade to any size, to fit your bed perfectly. It is also the perfect choice if you have a bedstead with a slatted base and will enhance the comfort of your mattress.

There are four options in the range, each hand-filled with only the finest natural fibres for superb comfort. Choose from two stylish ticking designs for a bespoke finish: Vispring Logo or Plain Satin.

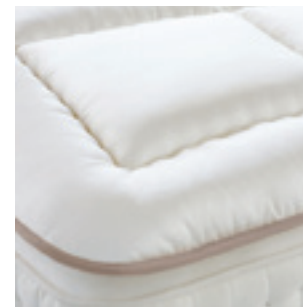
**Mattress toppers are not suitable for washing or dry cleaning.**

#### Heaven Luxury Supreme

Fabrics: Tick-533, Tick-534, Tick-556, Tick-593  
Piping in contrasting wool: Tick-2095  
Height: 10 cm

Upholstery: British fleece wool (300 gsm)  
British fleece wool (600 gsm)  
Layer of 1000 gsm horse tail  
British fleece wool (600 gsm)  
British fleece wool (300 gsm)

M-Pure  
Hybrid wool and cotton fill



#### Opulence

Fabrics: Tick- Tk-533, Tk-534, Tk-556, Tk-593  
Piping in contrasting wool: Tick-2095  
Height: 8 cm

Upholstery: British fleece wool (300 gsm)  
Silk (200 gsm)  
Layered British wool and cotton (1200 gsm)  
Silk (200 gsm)  
British fleece wool (300 gsm)

M-Pure  
Hybrid wool and cotton fill



Features fabric attachments with Vispring engraved wooden buttons to fasten to your Opulence mattress handles and keep the topper in place.



# VISPRING

Luxury Beds - London 1901

## Heaven Luxury

Fabrics: Tick-533, Tick-534, Tick-556, Tick-593  
Piping in contrasting wool: Tick-850  
Height: 7 cm

Upholstery: British fleece wool (300 gsm)  
Blended British fleece wool and cotton (1200 gsm)  
British fleece wool (300 gsm)



## Heaven

Fabrics: Tick-533, Tick-534, Tick-556, Tick-593  
Piping in same fabric as topper  
Height: 5 cm

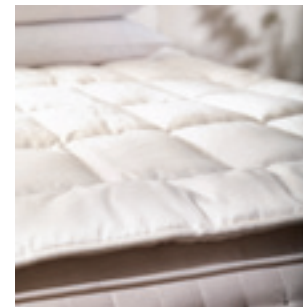
Upholstery: British fleece wool (300 gsm)  
Soft needled British fleece wool (600 gsm)  
British fleece wool (300 gsm)



## Dream

Fabrics: Tick-533, Tick-534, Tick-556, Tick-593  
Piping in same fabric as topper.  
Height: 4 cm

Upholstery: Blended British fleece wool and cotton (1000 gsm)



gsm - grammes per square metre

## DRAWER DIVAN

Extra cost to be added to the price of a high divan per drawer (see price list)



Foot-end standard side drawers  
with head-end continental drawer



Foot-end large drawer with  
head-end continental drawer



Foot-end large drawer with  
head-end standard side drawer

**The above are popular drawer configurations. Other drawer configurations are possible.**

Drawers can only be fitted on the high 31 cm divan. The foot-end large drawer is only available on 135 cm or 150 cm divans.

The shorter springs in drawer divans make them slightly firmer than high divans. Drawers cannot be fitted on the Viceroy or President divans.

### Drawer sizes

Continental Drawer	41 cm wide x 58 cm deep x 13 cm high
Standard Drawer	76 cm wide x 58 cm deep x 13 cm high
Foot End Drawer - 135 cm wide divan	117 cm wide x 58 cm deep x 11 cm high
Foot End Drawer - 150 cm wide divan	132 cm wide x 58 cm deep x 11 cm high

### Construction of drawer

Gaboon Plywood Timber from certified FSC source (Forest Stewardship Council)

All joints - Dovetailed

## DIVAN HEIGHTS

Choose from three\* different divan heights, depending on the style of your bedroom and your preferences about ease of access to your bed.



17 cm shallow sprung divan



25 cm low sprung divan



31 cm high sprung divan

Divan height is from bottom edge to top edge. “Doming” effect of upholstery fillings will add approximately 4 cm to the height if measured at the centre. Shepherd castors will add 7 cm, and locking castors 8,5 cm to the height from the floor to the bottom edge of the divan. The shorter springs in the shallow sprung divan and the low sprung divan make them slightly firmer.

\*President and Viceroy divans available in 25 cm and 33 cm heights only.

## IMPORTANT:

No bespoke divan heights are offered.

## DIVAN SPLITS

150 x 200 cm two piece divan (east - west split)      Z & L two piece divan (north - south split)

All sizes above 150 cm wide are two piece divans, and come with a north - south split. Upon request the split can be changed to east - west.

Divan base in quarter option available.

## DIVAN CORNERS

The following defaults apply, regardless of geographic territory, to define whether a divan has 4 round corners or 2 round and 2 square corners.

Divan Model	Single	East/West split divans	Linked divans with one-piece mattress	Linked divans with zipped mattresses
<b>De Luxe/Wool De Luxe</b>	All round	2 round and 2 square	2 round and 2 square	All round
<b>Prestige</b>	All round	2 round and 2 square	2 round and 2 square	All round
<b>Sovereign</b>	All round	2 round and 2 square	2 round and 2 square	All round
<b>Viceroy</b>	All round	2 round and 2 square	2 round and 2 square	All round
<b>President</b>	All round	2 round and 2 square	2 round and 2 square	All round

The fitment of skirts does not alter any of the above.

Any other corner configuration must be specified on the sales order.

**PLEASE NOTE:** Above is default. If you want to order a divan with all square corners, please specify this on sales order.

# VISPRING

Luxury Beds - London 1901

## DIVAN SKIRTS

Available as a supplement on President, Sovereign, Prestige and De Luxe divans. FOC on a Viceroy divan.

Please note. When adding a skirt to a base with supplement fabric, supplement fabric price will need to be added to skirt and divan.



## CUT-OUT CORNERS

Cut out corners for four-poster beds.

Priced per corner (see price list). Measurements and/or template will be required from the retailer/customer. Remember to allow "tucking-in" room for bed linens.



## ZIPPING

4 zips standard on zips and link sets which allows turning of of the mattress in all directions.

(Surcharges apply)



## MANTLE

To conceal the gap between divan bases.

Available as a supplement on all divans (FOC on Sovereign).

Mantles are not available on:

- Drawer divans
- Divans with skirts



## WOOL MATTRESS PAD

To put underneath the mattress, e.g. on mattresses with a slatted base.

The Vispring mattress pad provides protection between your Vispring mattress and the base of your bedstead, extending the life of your mattress and enhancing comfort.

We recommend that bedstead slats should be no more than 7,5 cm apart.



## QUILTED MATTRESS PROTECTORS

To put on top of the mattress.

Vispring recommends the use of a mattress protector to keep your mattress in beautiful condition.

The quilted mattress protector is made from softly quilted cotton percale with a pure new wool filling.

Available in all standard sizes and made to order for non standard sizes.



## FITTED DIVAN COVER

Fitted divan covers are a good way of changing the look of your divan to a fabric of your choice (not available on Drawer Divans).

NOTE: Only available when ordering a Vispring divan base. Available in Vispring fabrics only.

NOTE: If used with a linked divan, the middle corners of the divan bases need to be square, otherwise the pleats on the skirt will not allow the divans to be linked neatly together.





## PILLOWS

To complement the finest beds in the world, we have created a collection of luxuriously supportive pillows. All pillows are made with Vispring Comfort Chamber technology:

Outer Chambers

90% down, 10% feather filling to providing a wonderfully soft and breathable layer.

Inner Chamber

100% feather filling to provide perfect support for the neck

### **Hungarian Goose Feather and Down pillow**

- Simply the ultimate luxury pillow experience
- The highest quality Hungarian Goose Feather and Down for miraculous lightness and lofty support.
- Full 3 Comfort Chamber technology for beautiful feel and neck support control
- Outstanding temperature regulation
- 100% natural cotton cover with beige piping

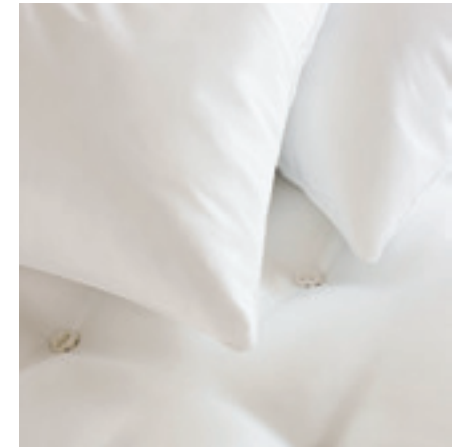
### **Pyrenean Duck Feather and Down**

- Luxurious blend of Pyrenean Duck Feather and Down
- 3 Comfort Chamber technology providing wonderful softness and essential support
- Helps to naturally regulate temperature; a cooler pillow on warm nights
- 100% natural cotton cover with grey piping

### **European Duck Feather and Down**

- A natural combination of Duck Feather and Down for complete night-long comfort.
- Single Comfort Chamber providing support and comfort: 95% European Duck Feather, 5% European Duck Down
- Helps to naturally regulate temperature; a cooler pillow on warm nights
- 100% natural cotton cover with white piping

**SIZES AVAILABLE:** Standard (75 x 50 cm), King size (90 x 50 cm) and Square (65 x 65 cm)



## DUVETS

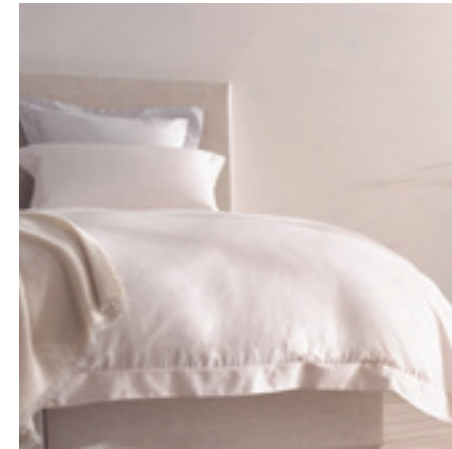
Discover the extravagantly soft, cosy, breathing duvets your Vispring bed deserves.

### **Hungarian Goose Down Duvet**

- 100% Hungarian Goose Down Duvet for exceptional comfort and warmth.
- Excellent recovery and voluminosity for maximum comfort
- 750 Fill Power for exceptional insulation and air circulation
- 100% Cotton Satin covers with extremely high 395 thread count for a beautiful satin sheen and touch and protection against feathers penetrating the fabric
- Weight: 190 g/m<sup>2</sup>
- TOG rating: 9.1 (BS5335-2:2006)
- Available in two sizes: 230 x 220 cm and 260 x 220 cm.

### **Pyrenean Duck Down and Feather Duvet**

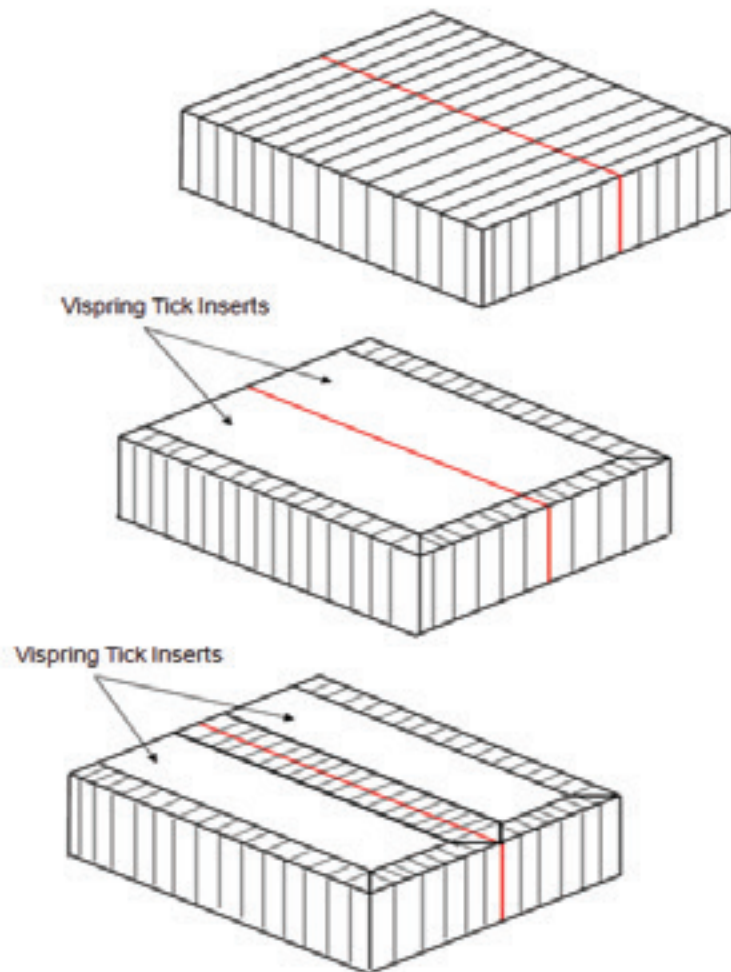
- A luxurious combination of 90% Pyrenean duck down and 10% Pyrenean duck feathers
- 100% Cotton Satin supremely soft duvet cover with tightly woven 293 thread count
- 700 Fill Power for insulation and air circulation
- Weight: 220 g/m<sup>2</sup>
- TOG rating: 7.8 (BS5335-2:2006)
- Available in two sizes: 230 x 220 cm and 260 x 220 cm.



## CUSTOMER'S OWN MATERIAL (C.O.M.)

Materials not chosen from a Vispring swatch.

Please specify the model when ordering divans in C.O.M.



### Model I

C.O.M. all over the divan. Not suitable for velvets as the mattress "travels" on the pile of the velvet.  
May require joins in the panel depending on the size of the divans.

### Model II

Suitable for one-piece super-king size mattresses where the two divan pieces will not be separated and is the default for double/kings (where the split runs at 90 degrees to that shown). Plain fabric insert and plain border between the two halves of the divan.

### Model III

A compromise in terms of fabric requirement. Suitable for zip & link sets where the bases might be separated. Plain fabric inserts on the two divan panels.

Please note:

Velvets are rail-roaded (i.e. the pile lies left to right) rather than the traditional up-down. This is done to avoid the need for seams in the divan borders.

Silks are to be avoided on the divan as the fabric shows the "bite" of the staples on the bottom edge of the divan.

## CUSTOMER'S OWN MATERIAL (C.O.M.) ON DIVANS

Fabric requirement for Customer's Own Material

Single & Rigid (one piece) models

The fabric is 140 cm wide and has no pattern repeat. (Model II is not available)

Single	Model I	Model I Drawer Divan	Model I with Skirts	Model III	Model III Drawer Divan	Model III with Skirts
<b>90 x 190</b>	6,5 m	8,5 m	8,5 m	6,5 m	6,5 m	6,5 m
<b>90 x 200</b>	7 m	8,5 m	8,5 m	6,5 m	6,5 m	6,5 m
<b>90 x 210</b>	7 m	8,5 m	8,5 m	6,5 m	6,5 m	6,5 m
<b>100 x 200</b>	9 m	8,5 m	8,5 m	6,5 m	6,5 m	6,5 m
<b>100 x 210</b>	9 m	9 m	9 m	7 m	7 m	7 m
<b>107 x 215</b>	9 m	9 m	9 m	7 m	7 m	7 m

Rigid Models	Model I	Model I Drawer Divan	Model I with Skirts	Model III	Model III Drawer Divan	Model III with Skirts
<b>135 x 190 Rigid</b>	9 m	9 m	9 m	7 m	7 m	7 m
<b>150 x 200 Rigid*</b>	9,5 m	9,5 m	9,5 m	7,5 m	7,5 m	7,5 m
<b>182 x 200 Rigid*</b>	10 m	10 m	10 m	8,5 m	8,5 m	8,5 m

# VISPRING

Luxury Beds - London 1901

Fabric requirement for Customer's Own Material - Linked Sets

The fabric is 140 cm wide and has no pattern repeat.

Linked Sets	Model I	Model I Drawer Divan	Model I with Skirts	Model II	Model II Drawer Divan	Model II with Skirts	Model III	Model III Drawer Divan	Model III with Skirts
<b>82.5 x 200 cm</b>	10,5 m	10,5 m	10,5 m	4 m	6,5 m	7 m	6,5 m	8,5 m	9 m
<b>90 x 190 cm</b>	10 m	10 m	10,5 m	4 m	6,5 m	7 m	6,5 m	8,5 m	9 m
<b>90 x 200 cm</b>	10,5 m	10,5 m	10,5 m	4 m	6,5 m	7 m	6,5 m	8,5 m	9 m
<b>90 x 210 cm</b>	11 m	11 m	11 m	4,5 m	7 m	7,5 m	6,5 m	8,5 m	9 m
<b>100 x 200 cm</b>	10,5 m	10,5 m	10,5 m	4,5 m	7 m	7,5 m	6,5 m	8,5 m	9 m
<b>100 x 210 cm</b>	11 m	11 m	11 m	5 m	7,5 m	8 m	7 m	8,5 m	9 m
<b>107 x 215 cm</b>	11,5 m	11,5 m	11,5 m	5 m	7,5 m	8 m	7 m	8,5 m	9 m

## CUSTOMER'S OWN MATERIAL (C.O.M.) ON HEADBOARDS

Fabric requirement for Customer's Own Material.  
The fabric is 140 cm wide and has no pattern repeat.

Headboard	Side(s)	90	120	135	162	182	202	222
<b>Achilles</b> Up to 130 cm high	Front	3,5 m	3,7 m	5 m	5,5 m	5,5 m	7 m	7 m
	Front & Back	4,5 m	5,5 m	6,5 m	7,5 m	7,5 m	9,5 m	9,5 m
<b>Aldo</b>	Front	5,5 m	5 m	5,5 m	6 m	6,5 m	7 m	7,5 m
	Front & Back	5,5 m	6,5 m	7 m	8 m	8,5 m	9 m	9,5 m
<b>Artemis</b>	Front	4,5 m	5 m	8 m	5,5 m	6 m	6 m	7 m
	Front & Back	5,5 m	6 m	6 m	6,5 m	7 m	7 m	8 m
<b>Asteria</b>	Front	n/a	n/a	n/a	n/a	n/a	n/a	n/a
	Front & Back	n/a	n/a	n/a	n/a	n/a	n/a	n/a
<b>Atlas</b>	Front	5 m	5,5 m	5,5 m	6 m	6 m	6,5 m	7 m
	Front & Back	6 m	7 m	7 m	8 m	8 m	9 m	9,5 m
<b>Berkeley</b>	Front	7 m	8 m	9 m	11 m	12 m	12 m	13 m
	Front & Back	n/a	n/a	n/a	n/a	n/a	n/a	n/a
<b>Ceto</b>	Front	5 m	5,5 m	5,5 m	6 m	6 m	6,5 m	7 m
	Front & Back	6 m	7 m	7 m	8 m	8 m	9 m	9,5 m
<b>Clabon</b>	Front	4,5 m	5 m	5 m	5,5 m	6 m	6,5 m	7 m
	Front & Back	5,5 m	6 m	6 m	6,5 m	7 m	7,5 m	8 m
<b>Eccleston</b>	Front	4,5 m	5 m	5 m	5,5 m	6 m	6,5 m	7 m
	Front & Back	5,5 m	6 m	6 m	6,5 m	7 m	7,5 m	8 m
<b>Elba</b> Up to 124 cm high	Front	n/a	n/a	n/a	n/a	n/a	n/a	n/a
	Front & Back	3,5 m	4 m	4,5 m	5 m	5,5 m	5,5 m	6 m
<b>Enyo</b>	Front	4,5 m	4,5 m	5,5 m	5,5 m	6 m	6 m	6,5 m
	Front & Back	5,5 m	6 m	6 m	7,5 m	8 m	8 m	8,5 m
<b>Gate</b>	Front	5 m	5,5 m	6 m	7 m	9 m	9 m	10 m
	Front & Back	6 m	8 m	10 m	11 m	13 m	13 m	14 m



# VISPRING

Luxury Beds - London 1901

Headboard	Side(s)	90	120	135	162	182	202	222
Grand Berkeley	Front	n/a	n/a	n/a	n/a	n/a	n/a	n/a
	Front & Back	n/a	n/a	n/a	n/a	n/a	n/a	n/a
Helios	Front	4,5 m	4,5 m	4,5 m	5,5 m	6 m	6 m	6,5 m
	Front & Back	5,5 m	6 m	6 m	7,5m	8 m	8 m	8,5 m
Hera	Front	4,5 m	5 m	5 m	6,5 m	7 m	7 m	7,5 m
	Front & Back	5,5 m	6 m	6 m	6m	7,5 m	8 m	8,5 m
Iris	Front	4,5 m	5 m	5 m	5,5 m	6 m	6 m	7 m
	Front & Back	5,5 m	6 m	6 m	6,5 m	7 m	7 m	8 m
Lennox	Front	4,5 m	5 m	5 m	5,5 m	6 m	6,5 m	7 m
	Front & Back	5,5 m	6 m	6 m	6,5 m	7 m	7,5 m	8 m
Moncorvo	Front	4,5 m	5 m	5 m	5,5 m	6 m	6,5 m	7 m
	Front & Back	5,5 m	6 m	6 m	6,5 m	7 m	7,5 m	8 m
Muses	Front	2,5 m	2,5 m	3 m	3 m	3,5 m	3,5 m	4 m
	Front & Back	3,5 m	3,5 m	4,5 m	5 m	5,5 m	5,5 m	6,5 m
Palladio <small>Based on orders with no joints</small>	Front	5,6 m	5,6 m	6,5 m	7 m	9 m	9 m	9 m
	Front & Back	6,6 m	6,6 m	8 m	8,5 m	9,5 m	9,5 m	9,5 m
Rhea (HB 32)	Front	2,5 m	2,5 m	3 m	3 m	3,5 m	3,5 m	4 m
	Front & Back	3,5 m	3,5 m	4,5 m	4,5 m	5,5 m	5,5 m	6,5 m
Theia	Front	n/a	n/a	n/a	n/a	n/a	n/a	n/a
	Front & Back	n/a	n/a	n/a	n/a	n/a	n/a	n/a
Themis (HB 110) <small>Always front and back</small>	</= 117cm	3,5 m	4 m	4,5 m	5 m	5 m	5,5 m	6 m
	> 117cm	4,5 m	5,5 m	6 m	7 m	7 m	7,5 m	8,5 m
Victoria	Front	5 m	5,5 m	6 m	6 m	6 m	7 m	7,5 m
	Front & Back	6 m	6,5 m	7 m	8 m	8 m	8 m	9 m

**NOTE:** These are estimates only, based on a 140 cm fabric roll without pattern. The amount of fabric needed may differ depending on the width of the fabric roll, as well as pattern repeat. **Please confirm amount of fabric needed with Vispring before placing your order.**

Limited Edition Lana, Kew, Asteria and Theia headboards are not available with C.O.M..

## CUSTOMER'S OWN MATERIAL (C.O.M.) ORDERING PROCESS FROM EUROPE

### STEP 1: CONFIRM SUITABILITY AND FABRIC REQUIREMENTS

When the consumer wants to order C.O.M., send details of the chosen fabric (supplier and fabric reference) to Vispring Customer Services; infoeurope@vispring.com, for them to confirm suitability and fabric requirements (the guide included within the Retail Support Manual is for plain fabric of 140 cm width only).

### STEP 2: PLACE ORDER

When placing the bed order, the order will be entered as a so-called quota. This quota number needs to be written on the package for reference when sending the fabric to the factory in Plymouth, UK.

### STEP 3: PREPARE THE SHIPMENT.

- The fabric needs to be supplied on two separate rolls, one roll for the divan(s) and one for the headboard.
- Clearly specify on each roll how much fabric is on the roll and what product it is for; divan or headboard.
- Please include clear upholstery placement instructions:
  - Vertical or horizontal  
(for example if striped fabric, how should the stripes be placed)
  - Front or back
  - Fabric repeats etc.
- Your company name and the quota number must be clearly visible and legible on the consignment/package from the outside and be attached to the order.

### STEP 4: SEND SHIPMENT

Send the parcel to Vispring via UPS and please include transmission of the UPS Tracking No. to stores@vispring.com and infoeurope@vispring.com

Please send your Customer Material (C.O.M) correctly to the following address:

Vispring Limited  
Ernesettle Lane  
Ernesettle  
Plymouth PL5 2TT  
UNITED KINGDOM

### ATTENTION: Ticking department

Telephone: +441752366311

Email: stores@vispring.com

*Parcel acceptance times: weekdays 07:30 -16:30*

**IMPORTANT:** The final destination of the fabric is the delivery country of the final product; United Kingdom is transit country only. It is important to state this correctly on the UPS form. This also needs to be noted on the commercial invoice, otherwise import sales tax will have to be paid in the UK.

### STEP 5: SHIPMENT RECEIVED AT VISPRING

Upon the receipt of the material in Plymouth, UK the order is recorded on the system and the delivery time applies from this date.

## GENERAL INFORMATION



**TOO SOFT** Your spine will bow downwards and cause pressure around your hips. A good test is to see if you can slide your hand beneath your back – if not, it's too soft.



**TOO FIRM** If your spine bows upwards and there's pressure around your shoulders and knees, the mattress is too firm. In this case, your hand will easily slide between the mattress and the hollow of your back.



Your spine should be straight and your whole body should feel evenly supported.

### How to choose your bed

#### 1 Try a number of beds

Vispring makes a range of beds, offering different spring tensions, fillings and sizes. Try a few in order to determine which one is the perfect option for you.

#### 2 Do not rush your purchase

Finding your ideal level of support and cushioning takes time. Test each bed for at least 10 minutes, with your partner if you share a bed. Lie in the position you usually sleep in and turn over a few times.

#### 3 Check the support

If the mattress is too firm, you will be able to slide your hand easily between the mattress and the hollow of your back. If the mattress is too soft, you will not be able to slide your hand beneath your back.

#### 4 Measure your room

Buying the largest bed you can accommodate will reduce sleep disturbance. Vispring can make divans in sections to negotiate small entrances and tight staircases.

#### 5 Make an investment

You will spend a third of your life in bed and a good night's sleep will contribute to your long term well-being, so it is worth investing in the best bed possible.

### Mattress support guidelines

Up to 70kg	Soft
70kg - 102kg	Medium
102kg - 127kg	Firm
Above 127kg	Extra Firm

### Combination Spring tension mattresses

There is no supplementary charge for this option. The combination spring tension option can only be offered for mattresses that are at least 150 cm wide. The combination choice and side must be specified when ordering either soft and medium, medium and firm or firm and extra firm. If you need a soft and firm or medium and extra firm combination then you must order a zip and link mattress as two steps in tension cannot be accommodated within a one piece mattress.

## PRODUCT CHARACTERISTICS AND RECOMMENDATIONS TO CUSTOMERS

### **Turning the mattress**

We suggest that a Vispring mattress is occasionally turned (seasonal turning), by doing so you can extend its life.

Vispring mattresses have fillings on both sides which means not only do you enjoy an enhanced level of comfort but you have two possible sleeping surfaces. By turning the mattress the fillings will settle more evenly, the mattress will ventilate and thus the life of the mattress will be prolonged.

With very large mattresses, the weight involved can make mattress turning a daunting experience. Many users, with our approval, merely swing the mattress from end to end without even lifting it from the divan base.

Providing you understand that upholstery settlement will be evident more quickly, there is no reason for you to struggle with the mattress. The extra wire in every Vispring coil permits each spring to work to maximise efficiency and without any deterioration in resilience over the long lifetime of the mattress.

### **Upholstery settlement**

Vispring mattresses have extremely generous upholstery with copious amounts of fillings on both sides of the mattress, designed to complement the springs and follow the body contours. This naturally takes longer to settle evenly than the upholstery found on other beds.

It is not possible to stipulate the exact settlement period, as the time taken will vary according to the filling types and quantities, and also the weight and sleeping pattern of the individual. Normally the upholstery in the centre of the mattress, where most of the body's weight is concentrated, will naturally 'bed down' quicker. Should you find at the early stages of the mattress's life that settlement is uneven and visually undesirable, we suggest that you turn your mattress, thus balancing out the pressure and allowing the fillings to settle more evenly, while you sleep on the opposite side of the mattress.

## **Caring for your bed/mattress**

- Do not bend or roll your new mattress, it will permanently damage the spring unit and invalidate any warranties or guarantees.
- Let the mattress breathe, like a new car, a new bed may initially have a 'new' smell about it. This will eventually disperse if well aired.
- Body shaped impressions are normal, impression marks - sometimes known as settlement - are a normal characteristic of a quality mattress working as intended to conform to the shape of your body. These will be minimised with regular turning.
- Getting used to your new bed. Your body will take a while to adjust to sleeping on a new surface, so don't worry if your new bed doesn't immediately meet your expectations. Give it time - it could take a few weeks.
- Use a mattress protector to prolong the life of the mattress.

## **Packaging**

All mattresses and divans are bagged and boxed to protect the product when in transit.

## **Other general information**

On consumer orders for mattresses the tension is detailed on a label sewn into the head end of the mattress. Similarly, the divan model is on a label sewn into the head end. Only on shop floor display models are the tensions and divan names embroidered.

All deep divans have piped borders top and bottom, except when you choose a Faux Suede fabric, in which case the piping will be on bottom of the divan only. On bed bases we do not pipe the bottom of the divan.

Please note that a 90 cm mattress will feel firmer than a 150 cm mattress due to closer proximity of side stitching.

Please note a new mattress will feel firmer to begin with than an old mattress.

On a high divan we use a 150 mm pocket spring, on all other divans we use a 75 mm pocket spring.

You can use any of our mattresses on bedsteads. Please note that slats should be no wider apart than 7,5 cm, mattresses will always feel firmer on slats. We also recommend the use of a wool mattress pad for support.

On delivery it is common for the mattress to appear shorter than the divan. With regular use and turning the mattress will expand.

## 10 REASONS WHY YOU SHOULD BUY A VISPRING

Customers often wonder “Why should I spend on a Vispring?” and “What am I getting for my money, as all beds look the same?”. Below are 10 key points which set Vispring apart from our competitors and will reassure you and your customer that this an investment you will be proud of.

### 1. **30 Year Guarantee on Mattresses and Divans**

Most competitors offer five or ten years. This is not a Warranty, but a complete Guarantee against manufacturing defects.

### 2. **Comfort Promise**

The ability to change spring tension within 90 nights. No other competitor offers this!

### 3. **Genuine hand side stitching**

This improves the feel and longevity of the mattress. Very few other factories construct beds like this. It costs more to produce, but it enhances the lifespan of the product, giving complete edge-to-edge support.

### 4. **Vanadium steel springs**

Most other companies uses re-cycled wire, which has less resilience resulting in that the springs will compact quicker.

### 5. **Honeycomb nested springs in calico pockets**

The open weave of cotton calico is supremely air permeable and is crucial in ensuring a fresh and hygienic mattress and, therefore, a good night's sleep. Honeycombing allows more springs within the mattress, which provides improved support.

### 6. **Generous quantities of natural quality materials**

All Vispring mattresses contain generous quantities of natural fillings, without the use of cheaper synthetic layers. Vispring is one of the only bed makers that tell you the exact quantity of fillings in every mattress.

### 7. **Mattress covers are of the highest quality, allowing excellent breathability**

Cheaper covers used by many bed makers do affect the absorbency and breathability making the mattress warmer and stickier in warm climates. All Vispring mattress ticks are treated with M-Pure to ensure a chemical-free sleeping surface.

### 8. **160 mm springs used in the high divan**

All Vispring bases offer edge to edge support, due to Vanadium Steel pocket springs covering the entire base. This leads to better support, increased comfort and improved lifespan of the product. Other companies use either a hard base, 100 mm coil springs or 100 mm pocketed springs, but with a firm edge to save cost.

### 9. **The Vispring divan base is constructed with slow grown Scandinavian timber, which is glued and screwed for longevity, and reinforced with hardwood corner blocks**

Most competitors use inferior timber and staple their joints which is much cheaper construction method..

### 10. **Bases filled with natural upholstery allowing it to breathe**

Foam is often used in bases for cost reduction. We use more natural materials in our divan bases that several manufacturers use in the mattresses.



## VISPRING UNIQUE SELLING POINTS (USP'S)

1. With over 120 years of experience handcrafting mattresses, Vispring has become one of the most trusted and well-known bed makers in the UK and worldwide.  
**Benefit to the consumer-** Peace of mind when investing in the brand.
2. All mattresses are made of natural materials; no plastic, polyester, foam or other man-made products or chemicals are used in the manufacturing process.  
**Benefit to the consumer** Natural materials helps the mattress breathe well, thus absorbing body heat and moisture Unlike man-made substances, natural materials aren't bad for you and do not harm your skin. The mattresses are also very durable.
3. All Vispring mattresses are made in the United Kingdom; no part of the production is sub-contracted to other UK or overseas manufacturers.  
**Benefit to the consumer-** All parts of production are controlled by Vispring in one UK factory.
4. Mattress edges are hand-sewn to provide greater comfort and longevity.  
**Benefit to the consumer-** There is no hard edge around the mattress, providing greater comfort and a larger sleeping surface.
5. Un-interrupted air-flow; the unique construction of the mattress layers means there is a constantly fresh and healthy air-flow between the mattress and body. **Benefit to the consumer-** An unrivalled level of sleeping comfort.
6. The use of Vanadium steel springs and the high quality of craftsmanship gives us the confidence to offer a 30-year guarantee- one of the longest in the industry.  
**Benefit to the consumer-** Peace of mind when investing in the brand.
7. Sewn calico pocketed springs form the most independent type of springing, compressing and recovering only when needed by the body.  
**Benefit to the consumer-** Sleeping partners are less likely to disturb one another when turning, and each part of the body is supported.
8. Springs are made in our Plymouth factory; most mattress manufacturers buy springs from a spring manufacturer.  
**Benefit to the consumer-** All elements of production are controlled by the factory, with the availability of a variety of spring tensions and comfort types.
9. All our Divan Bases are made with pocket springs only; most manufacturers use an inferior 'Coil Spring' or no spring at all  
**Benefit to the consumer-** The mattress and the divan are two elements of the bed set working together and supporting each other to provide comfort and longevity.
10. Bespoke; any size or shape bed can be made. We can make mattresses for yachts, four-poster frames, other manufacturers frames, and we can finish our divans and headboards with customer's own choice of fabric.  
**Benefit to the consumer-** Complete interior design solution.

# VISPRING




Luxury Beds - London 1901

VISPRING LIMITED

---

Ernesettle Lane  
Plymouth, PL5 2TT  
UNITED KINGDOM

Phone +44 1752 366311  
Fax +44 1752 355108  
Email [infoeurope@vispring.com](mailto:infoeurope@vispring.com)  
[www.vispring.com](http://www.vispring.com)

 [vispringbeds](https://www.facebook.com/vispringbeds)  
 [@vispring](https://twitter.com/@vispring)  
 [vispringbeds](https://www.instagram.com/vispringbeds)

Vispring reserves the right to alter specifications without notice.  
All measurements are approximate, small deviations are possible.

Printed for Europe in May 2022

© Vispring Limited 2022